



# DiagSWing DMS

## Distributed measuring system

- Replacement of regular measurements performed manually by maintenance staff
- Enabling faults detection and incidents investigation via DiagSWing LDS-3



### GENERAL DESCRIPTION

Distributed measuring system DiagSWing DMS (further DMS) comprises several units primarily designed as an ancillary tool of the Local diagnostic system DiagSWing LDS-3. Units can be used independently or as subsystems of other equipment.

### BASIC TECHNICAL DESCRIPTION

DMS-EP and DMS-EPI unit is designed for recording the effective input of up to four independent point machines (e.g. PointSWing EP-6xx). Simultaneously the DMS-EP unit is used for measuring the insulation resistance of power cables and point machines against ground and indication of its drop under a tolerable limit value.

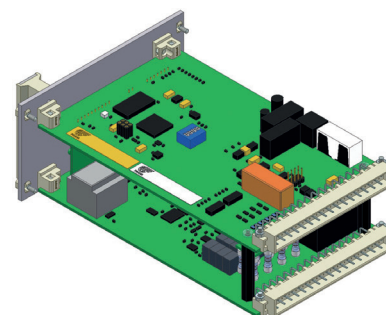
DMS-HIS and DMS-HIS-120 Units are designed for measuring of insulation

resistance of up to four IT systems against ground and indication of its drop under a tolerable limit value.

DMS-U and DMS-U2 Units are designed for measuring of voltage in range DC 6-40V (on one input) and voltage (true RMS) in range AC 0-300VEF, 50Hz (on three inputs).

DMS-T/RSX and DMS-T/ETH Units are designed for measuring the indoor temperature.

RJS-100 and RJS-210 Units are designed for measuring of two temperatures, scanning the fan condition in the computer chassis and cabinets, scanning the cabinet door closure or checking the contact status e.g. aircondition unit operation.



DMS-EP unit for point machine diagnostic





## BASIC TECHNICAL PARAMETERS

Supply voltage	DC 24V ± 20 %
Temperature range	climatic category T1 according to EN 50 125-3
Humidity	10 % to 80 %
EMC compliance	EN 50121-4, EN 61000-4-2, EN 61000-4-3, EN 61000-4-4, EN 61000-4-5, EN 61000-4-6, EN 61000-6-4
Service life	minimum 25 years

