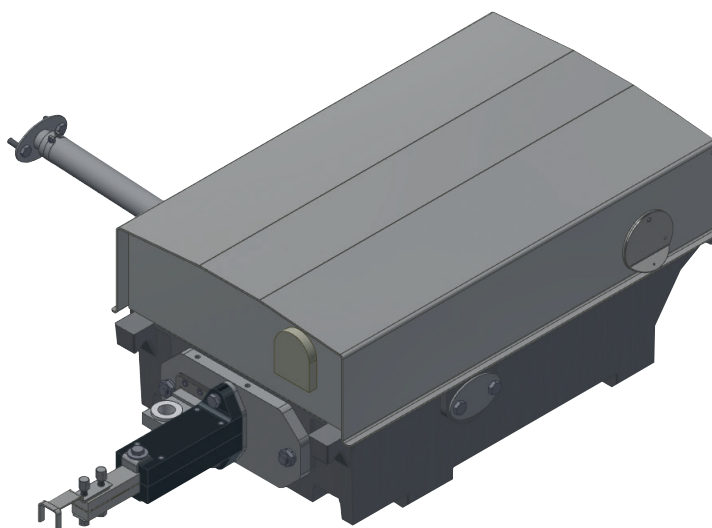




PointSWing EP-649

Electromechanical point machine

- Easy installation
- Universal use
- Point machine with external lock
- Long service life
- Minimum maintenance
- High railway environment resistance



GENERAL DESCRIPTION

The electromechanical point machine PointSWing EP-649 (further EP-649) is used for control and securing of single points, crossings, movable point frogs and derailleurs.

EP-649 is manufactured in a trailable or non-trailable version, it is right or left-hand and designed for mounting with a toggle or fixed set / bracket or to a hollow sleeper.

BASIC TECHNICAL DESCRIPTION

EP-649 has no internal lock. EP-649 consists of a housing with a lockable lid. Moving, throwing, retaining, switching and checking devices are built into the housing.

EP-649 is designed for points with external locks.

For single multiple-lock points with higher throwing resistance the multiple point machine control can be used.



Electromechanical point machine EP-649





BASIC TECHNICAL PARAMETERS

Power supply	AC 3 x 400V ± 10 %, 50 Hz; AC 230V ± 10 %, 50 Hz; DC 110V
Temperature range	climatic category T1 according to EN 50 125-3
Humidity	to 100 %
Weight	approximately 190 kg
Electric strength	4 kV, 50 Hz, 1 min.
Stroke	110 mm to 240 mm
Throwing force controlled by clutch	3 kN to 6 kN
Retaining force (trailable point machine)	9 kN + 1 kN
Retaining force (non- trailable point machine)	20 kN to 75 kN
Throwing time	0,5 s to 6 s
Cover rating	IP54 standard, IP65 upon request
MTBF	min. 3 x 10 ⁵ throwing overs
Service life	minimum 25 years (min. 2 x 10 ⁶ throwing overs)
Internal wiring	4-wire (N86, ESA, Modest, E1)
Point position checking	using the checking mechanism

