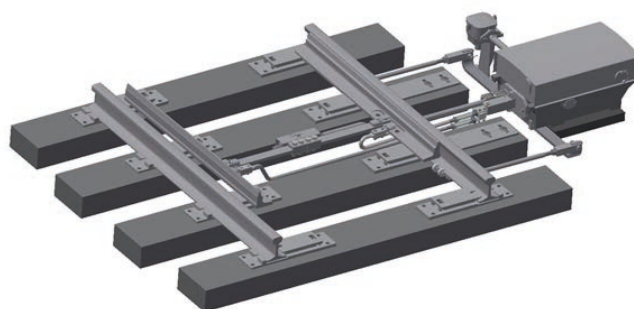




PointSwing EPZ-6xx

Electromechanical point machine (EPZ-6xx series)

- Easy installation
- Universal use
- Point machine with internal lock functionality
- Long service life
- Minimum maintenance
- High railway environment resistance



GENERAL DESCRIPTION

The electromechanical point machine PointSwing EPZ-6xx (further EPZ-6xx) is used for control and securing of single points without external lock.

EPZ-6xx are manufactured in a trailable or non-trailable version, they are right or left-hand and they are designed for mounting with

a toggle or fixed set/bracket or to a hollow sleeper by means of a four-point fixation.

BASIC TECHNICAL DESCRIPTION

The point machines have internal lock function. EPZ-6xx consist of a housing with a lockable lid. Moving, throwing, retaining, switching and checking devices are built into the housing.

EPZ-6xx are designed for points without external locks and with coupled tongues whose throwing resistance does not exceed 4.5 kN.



EPZ-6xx located in E-MAS depot – Malaysia





BASIC TECHNICAL PARAMETERS

Weight	approximately 180 kg	
Electric strength	4 kV	
Temperature range	-40 °C to +70 °C	
Output	AC 3 × 400 V	550 W
	AC 230 V	290 W
	DC 110 V	380 W
MTBF with load up to 3,5 kN	min. 6×10^5 throwing overs	
Mean service life	min. 2×10^6 throwing overs (25 years)	
Stroke	170 ⁺² mm	
Throwing force controlled by clutch	3 to 6 kN \pm 10%, max. 8 kN	
Retaining force (trailable point machine)	7 kN \pm 15 %	
Retaining force (non- trailable point machine)	20 to 75 kN (depending on type of connection to the point)	
Throwing time	2,5 to 6 s	
Cover rating	IP 54 standard, IP 65 upon request	
Internal wiring	depending on client's specification	
Point position checking	using the checking mechanism	

