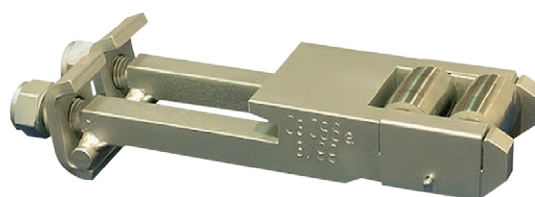




# PointSWing VSV

*Lifting roller chair*

- Easy installation
- Considerable lubricant saving
- Point blades remain in a direct contact with slide roller chairs in both end positions
- Minimum maintenance
- High railway environment resistance



## GENERAL DESCRIPTION

The goal of every railway administration is to operate the points ecologically and almost maintenance-free. One way to resolve this problem is to install the point lifting roller chairs PointSWing VSV (further VSV) substituting the sliding friction by the

rolling friction. The main goal of VSV is to minimise or totally remove any maintenance.

VSV provides a gradual lift-up of each point blade and smooth blade movement over the guide rollers.

In both end positions (open and closed) the point blades always remain in a direct contact with slide chairs (very tight).

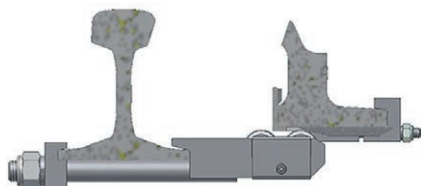
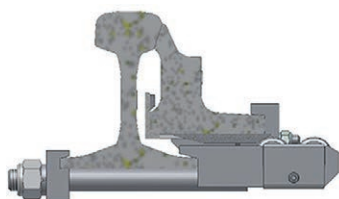
VSV is placed in between the sleepers where the external mounting or their exchange is easy and cleaning and maintenance quite convenient.

## BASIC TECHNICAL DESCRIPTION

VSV is preferably manufactured for UIC 60, S 49 and R 65 superstructure. VSV is designed as follows:

- Twin rollers, designed for mounting in between the sleepers, with minimum point blade opening 145 mm
- Single roller, designed for mounting in between the sleepers, with minimum point blade opening 90 mm (this corresponds with hump yard points)

Roller height can be regulated by 1 mm within a range 3–6 mm.





## BASIC TECHNICAL PARAMETERS

Weight	3,7 kg (hump 3,3 kg)
Temperature range	-40 °C to +70 °C

