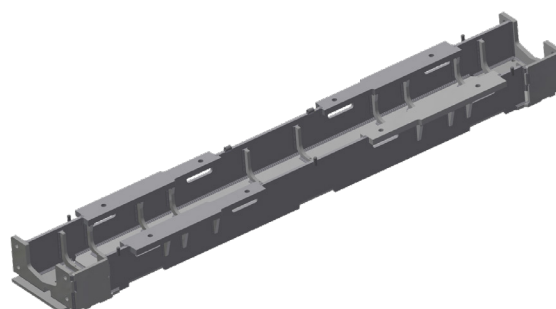




# PointSWing ZP-01

## Hollow sleeper

- **Narrow variant** - it replaces one railway sleeper
- **Wide variant** - it replaces two railway sleepers
- **Mechanically resistant railway construction according to EN 16431**
- **Operational and atmospheric resistance obvious for railway operation**



### GENERAL DESCRIPTION

Hollow sleeper PointSWing ZP-01 (further ZP-01) is a load-bearing steel structure forming part of the point.

ZP-01 is designed for placing of point lock (clamp lock, jaw lock), throwing and checking rods and fixation of point machine (e.g. PointSWing EP-6xx).

ZP-01 enables mounting of electric point heating rods.

ZP-01 can be used for single and multiple point locks.

ZP-01 can be installed with new single points or points under reconstruction. The narrow ZP-01 in divided variant is preferably used to facilitate installation in adverse construction or terrain conditions.

The narrow ZP-01 allows to maintain the original arrangement of sleepers and replaces only one concrete or wooden sleeper.

Drilling of ZP-01 is adapted for mounting of thrusting/lifting roller chairs and rail bearing plates.

Four Ø 28 mm holes are drilled in the front of ZP-01 to connect the point machine (e.g. PointSWing EP-6xx). The front flanges allow the right or left connection of point machine.

ZP-01 is made entirely as a weldment. ZP-01 in divided variant is made of two pieces of identical weldments screwed together in the middle.



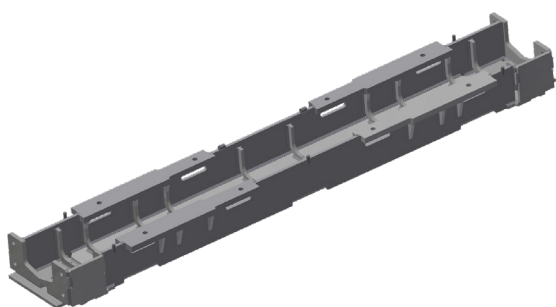
*Narrow ZP-01 – divided variant (point reconstruction)*



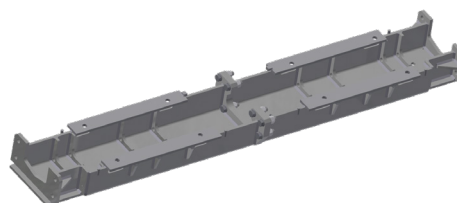


## BASIC TECHNICAL DESCRIPTION

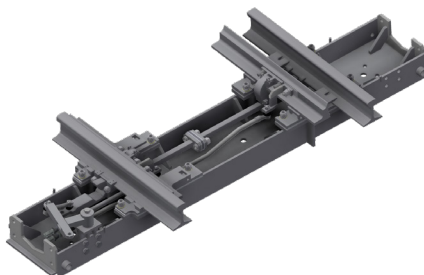
Insulation resistance between hollow sleeper and rails	min. 20 MΩ
Surface treatment	zinc dipping
Wight: narrow ZP-01	from 320 kg
narrow ZP-01 (divided variant)	from 322 kg
Wide ZP-01	from 450 kg
Service life	minimum 25 years



*Narrow ZP-01 (not divided)*



*Narrow ZP-01 (divided)*



*Wide ZP-01 with jaw lock*

